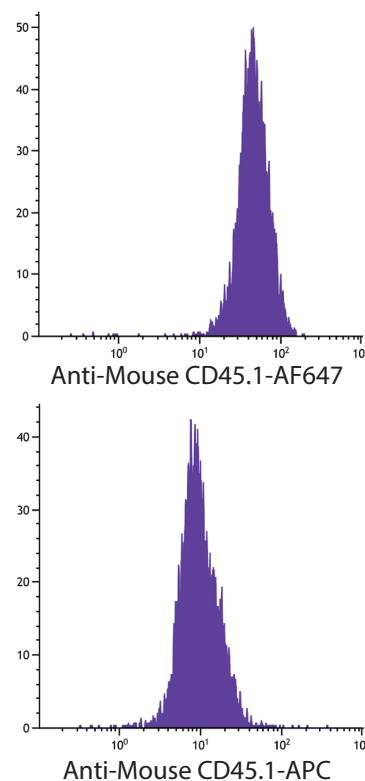


New Alexa Fluor® and Pacific Blue™ Primary Antibodies

SouthernBiotech has introduced a range of human and mouse specific antibodies for use in multi-color flow cytometry analysis.

- Alexa Fluor® 488 - Alternative to FITC
- Alexa Fluor® 647 - Alternative to APC and Cy®5
- Pacific Blue™ - Incorporates the violet laser and exhibits minimal spectral overlap with green fluorophores

Figure - Splenocytes from SJL/J mice were stained with Mouse Anti-Mouse CD45.1-AF647 (Cat. No. 1795-31) and APC (Cat. No. 1795-11). Lymphocytes were gated and analyzed by flow cytometry. Note the higher fluorescence intensity of the AF647 conjugate compared to APC.



Human Primary Antibodies

Cat. No.	Description	Clone	Size	Cat. No.	Description	Clone	Size
9515-26	Mouse Anti-Human CD3-PACBLU	UCHT1	100 tests	9561-31	Mouse Anti-Human CD14-AF647	61D3	100 tests
9515-30	Mouse Anti-Human CD3-AF488	UCHT1	100 tests	9570-30	Mouse Anti-Human CD16-AF488	GRM1	100 tests
9515-31	Mouse Anti-Human CD3-AF647	UCHT1	100 tests	9570-31	Mouse Anti-Human CD16-AF647	GRM1	100 tests
9522-30	Mouse Anti-Human CD4-AF488	RFT-4g	100 tests	9340-26	Mouse Anti-Human CD19-PACBLU	SJ25-C1	100 tests
9522-31	Mouse Anti-Human CD4-AF647	RFT-4g	100 tests	9340-30	Mouse Anti-Human CD19-AF488	SJ25-C1	100 tests
9526-26	Mouse Anti-Human CD5-PACBLU	UCHT2	100 tests	9340-31	Mouse Anti-Human CD19-AF647	SJ25-C1	100 tests
9526-31	Mouse Anti-Human CD5-AF647	UCHT2	100 tests	9400-30	Mouse Anti-Human CD44-AF488	F10-44-2	100 tests
9536-30	Mouse Anti-Human CD8-AF488	RFT-8	100 tests	9400-31	Mouse Anti-Human CD44-AF647	F10-44-2	100 tests
9536-31	Mouse Anti-Human CD8-AF647	RFT-8	100 tests	9456-30	Mouse Anti-Human CD56 (LFA-3)-AF488	MEM 188	100 tests
9546-26	Mouse Anti-Human CD11b (Mac-1a)-PACBLU	ICRF44	100 tests	9730-30	Mouse Anti-Human CD95 (Fas)-AF488	DX-2	100 tests
9546-30	Mouse Anti-Human CD11b (Mac-1a)-AF488	ICRF44	100 tests	9730-31	Mouse Anti-Human CD95 (Fas)-AF647	DX-2	100 tests
9546-31	Mouse Anti-Human CD11b (Mac-1a)-AF647	ICRF44	100 tests	9835-26	Mouse Anti-Human CD107a (LAMP-1)-PACBLU	H4A3	100 tests
9551-30	Mouse Anti-Human CD11c-AF488	3.9	100 tests	9840-30	Mouse Anti-Human CD107b (LAMP-2)-AF488	H4B4	100 tests
9551-31	Mouse Anti-Human CD11c-AF647	3.9	100 tests	9840-31	Mouse Anti-Human CD107b (LAMP-2)-AF647	H4B4	100 tests
9561-30	Mouse Anti-Human CD14-AF488	61D3	100 tests	12200-31	Mouse Anti-Human Foxp3-AF647	SB151b	100 tests

Mouse Primary Antibodies

Cat. No.	Description	Clone	Size	Cat. No.	Description	Clone	Size
1530-30	Hamster Anti-Mouse CD3e-AF488	145-2C11	0.1 mg	1705-30	Rat Anti-Mouse CD62L (L-selectin)-AF488	MEL-14	0.1 mg
1530-31	Hamster Anti-Mouse CD3e-AF647	145-2C11	0.1 mg	1705-31	Rat Anti-Mouse CD62L (L-selectin)-AF647	MEL-14	0.1 mg
1540-30	Rat Anti-Mouse CD4 (L3T4)-AF488	GK1.5	0.1 mg	1715-26	Hamster Anti-Mouse CD69 (VEA)-PACBLU	H1.2F3	0.1 mg
1540-31	Rat Anti-Mouse CD4 (L3T4)-AF647	GK1.5	0.1 mg	1715-30	Hamster Anti-Mouse CD69 (VEA)-AF488	H1.2F3	0.1 mg
1550-26	Rat Anti-Mouse CD8a (Ly-2)-PACBLU	53-6.7	0.1 mg	1715-31	Hamster Anti-Mouse CD69 (VEA)-AF647	H1.2F3	0.1 mg
1550-30	Rat Anti-Mouse CD8a (Ly-2)-AF488	53-6.7	0.1 mg	1735-31	Rat Anti-Mouse CD86 (B7-2)-AF647	GL1	0.1 mg
1550-31	Rat Anti-Mouse CD8a (Ly-2)-AF647	53-6.7	0.1 mg	1750-26	Rat Anti-Mouse CD90.2 (Thy-1.2)-PACBLU	30-H12	0.1 mg
1560-30	Rat Anti-Mouse CD11b (Mac-1a)-AF488	3A33	0.1 mg	1750-30	Rat Anti-Mouse CD90.2 (Thy-1.2)-AF488	30-H12	0.1 mg
1575-26	Rat Anti-Mouse CD19-PACBLU	6D5	0.1 mg	1750-31	Rat Anti-Mouse CD90.2 (Thy-1.2)-AF647	30-H12	0.1 mg
1575-30	Rat Anti-Mouse CD19-AF488	6D5	0.1 mg	1925-30	Rat Anti-Mouse CD102 (ICAM-2)-AF488	3C4	0.1 mg
1575-31	Rat Anti-Mouse CD19-AF647	6D5	0.1 mg	1925-31	Rat Anti-Mouse CD102 (ICAM-2)-AF647	3C4	0.1 mg
1625-26	Rat Anti-Mouse CD31 (PECAM-1)-PACBLU	390	0.1 mg	1810-26	Hamster Anti-Mouse CD103-PACBLU	2E7	0.1 mg
1625-30	Rat Anti-Mouse CD31 (PECAM-1)-AF488	390	0.1 mg	1810-30	Hamster Anti-Mouse CD103-AF488	2E7	0.1 mg
1625-31	Rat Anti-Mouse CD31 (PECAM-1)-AF647	390	0.1 mg	1810-31	Hamster Anti-Mouse CD103-AF647	2E7	0.1 mg
1640-26	Rat Anti-Mouse CD38-PACBLU	90	0.1 mg	1860-26	Rat Anti-Mouse CD105-PACBLU	MJ7/18	0.1 mg
1640-30	Rat Anti-Mouse CD38-AF488	90	0.1 mg	1920-30	Rat Anti-Mouse CD107a (LAMP-1)-AF488	1D4B	0.1 mg
1640-31	Rat Anti-Mouse CD38-AF647	90	0.1 mg	1880-30	Rat Anti-Mouse CD117 (c-kit)-AF488	2B8	0.1 mg
1660-30	Rat Anti-Mouse CD45 (LCA)-AF488	I3/2.3	0.1 mg	1880-31	Rat Anti-Mouse CD117 (c-kit)-AF647	2B8	0.1 mg
1660-31	Rat Anti-Mouse CD45 (LCA)-AF647	I3/2.3	0.1 mg	1755-26	Rat Anti-Mouse Ly-6A/E-PACBLU	D7	0.1 mg
1795-26	Mouse Anti-Mouse CD45.1 (Ly-5.1)-PACBLU	A20	0.1 mg	1755-30	Rat Anti-Mouse Ly-6A/E-AF488	D7	0.1 mg
1795-30	Mouse Anti-Mouse CD45.1 (Ly-5.1)-AF488	A20	0.1 mg	1755-31	Rat Anti-Mouse Ly-6A/E-AF647	D7	0.1 mg
1795-31	Mouse Anti-Mouse CD45.1 (Ly-5.1)-AF647	A20	0.1 mg	1760-26	Rat Anti-Mouse Ly-6C-PACBLU	HK1.4	0.1 mg
1800-26	Mouse Anti-Mouse CD45.2 (Ly-5.2)-PACBLU	104	0.1 mg	1760-30	Rat Anti-Mouse Ly-6C-AF488	HK1.4	0.1 mg
1800-30	Mouse Anti-Mouse CD45.2 (Ly-5.2)-AF488	104	0.1 mg	1760-31	Rat Anti-Mouse Ly-6C-AF647	HK1.4	0.1 mg
1800-31	Mouse Anti-Mouse CD45.2 (Ly-5.2)-AF647	104	0.1 mg	1900-26	Rat Anti-Mouse Ly-6G (Gr-1)-PACBLU	RB6-8C5	0.1 mg
1665-26	Rat Anti-Mouse CD45R (B220)-PACBLU	RA3-6B2	0.1 mg	1900-30	Rat Anti-Mouse Ly-6G (Gr-1)-AF488	RB6-8C5	0.1 mg
1665-30	Rat Anti-Mouse CD45R (B220)-AF488	RA3-6B2	0.1 mg	1900-31	Rat Anti-Mouse Ly-6G (Gr-1)-AF647	RB6-8C5	0.1 mg
1665-31	Rat Anti-Mouse CD45R (B220)-AF647	RA3-6B2	0.1 mg	1805-26	Mouse Anti-Mouse NK1.1-PACBLU	PK136	0.1 mg
1675-31	Rat Anti-Mouse CD45RB-AF647	C363.16A	0.1 mg	1805-30	Mouse Anti-Mouse NK1.1-AF488	PK136	0.1 mg
1806-30	Rat Anti-Mouse CD49b (VLA-2a)-AF488	DX5	0.1 mg	1785-26	Hamster Anti-Mouse TCRβ-PACBLU	H57-597	0.1 mg
1806-31	Rat Anti-Mouse CD49b (VLA-2a)-AF647	DX5	0.1 mg	1785-30	Hamster Anti-Mouse TCRβ-AF488	H57-597	0.1 mg
1695-30	Rat Anti-Mouse CD49e-AF488	5H10.27	0.1 mg	1785-31	Hamster Anti-Mouse TCRβ-AF647	H57-597	0.1 mg
1695-31	Rat Anti-Mouse CD49e-AF647	5H10.27	0.1 mg	1780-30	Hamster Anti-Mouse TCRγδ-AF488	UC7-13D5	0.1 mg
1701-26	Rat Anti-Mouse CD54 (ICAM-1)-PACBLU	YN1/1.7.4	0.1 mg	12400-31	Rat Anti-Mouse Foxp3-AF647	SB168a	0.1 mg
1701-30	Rat Anti-Mouse CD54 (ICAM-1)-AF488	YN1/1.7.4	0.1 mg	10240-26	Rat Anti-Mouse IFN-γ-PACBLU	XMG1.2	0.1 mg
1701-31	Rat Anti-Mouse CD54 (ICAM-1)-AF647	YN1/1.7.4	0.1 mg	10240-30	Rat Anti-Mouse IFN-γ-AF488	XMG1.2	0.1 mg
1705-26	Rat Anti-Mouse CD62L (L-selectin)-PACBLU	MEL-14	0.1 mg	10202-30	Rat Anti-Mouse IL-2-AF488	JES6-5H4	0.1 mg

Isotype Controls

Cat. No.	Description	Clone	Size	Cat. No.	Description	Clone	Size
0102-26	Mouse IgG ₁ -PACBLU	15H6	100 tests	0117-31	Rat IgG _{2a} -AF647	KLH/G2a-1-1	0.1 mg
0102-30	Mouse IgG ₁ -AF488	15H6	100 tests	0118-26	Rat IgG _{2b} -PACBLU	KLH/G2b-1-2	0.1 mg
0102-31	Mouse IgG ₁ -AF647	15H6	100 tests	0118-30	Rat IgG _{2b} -AF488	KLH/G2b-1-2	0.1 mg
0103-26	Mouse IgG _{2a} -PACBLU	HOPC-1	100 tests	0118-31	Rat IgG _{2b} -AF647	KLH/G2b-1-2	0.1 mg
0103-30	Mouse IgG _{2a} -AF488	HOPC-1	100 tests	0119-31	Rat IgG _{2c} -AF488	SB86b	0.1 mg
0103-31	Mouse IgG _{2a} -AF647	HOPC-1	100 tests	0121-26	Hamster IgG-PACBLU		0.1 mg
0116-26	Rat IgG ₁ -PACBLU	KLH/G1-2-2	0.1 mg	0121-30	Hamster IgG-AF488		0.1 mg
0117-26	Rat IgG _{2a} -PACBLU	KLH/G2a-1-1	0.1 mg	0121-31	Hamster IgG-AF647		0.1 mg
0117-30	Rat IgG _{2a} -AF488	KLH/G2a-1-1	0.1 mg				

Pacific Blue™ is a trademark and Alexa Fluor® is a registered trademark of and licensed under patents assigned to Molecular Probes, Inc. Cy® is a registered trademark of GE Healthcare.